



News for **The BOSS**  
May 24, 2000

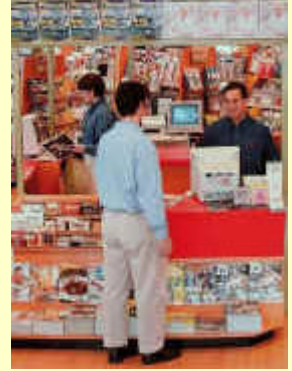
## Increase Picker Performance

### Lower Operational Cost and Improve Accuracy

DPS released production of an exciting new feature for Pick to Tote facilities that "optimizes" the procession of totes through your pick area. The benefit of this approach is increased picker productivity by quickly advancing the tote to each of the pickers (no delay of tote presentation to pickers throughout tie line) vs traditional picking which would keep a tote at a zone until tote is full thereby delaying advancement of totes into succeeding zones. Results are lower cost to pick your products and fastest invoice completion.

**Reported results show over a 15% increase in picker output.**

The "BIN" and "TOTE" columns of the reports (Traditional Pick Displayed vs Optimum Tote flow) illustrate how the system "optimizes" tote flow through zone. Totes advance through zones by rules set to insure "best practices" for sequential tote loading of titles (pick "optimum" number of titles within zone to rapidly advance tote to next zone - spreading the title picking allocation across the total number of totes to fulfill customer's order). The title to tote allocation/packing looks at maximum weight and volume for tote (reserving a small portion of space to spread title packing rather than require additional totes for an account) forcing rapid tote advancement through zones filling the tote with best volume / weight title combination.



### Traditional Pick Allocation

P50 - TOTE USAGE AUDIT REPORT FOR 05000000 05/04/00 PAGE

SEQ	NBR	RETAILER	INV NBR	BIN	TOTE	TITLE	ISS	NAME	BUN	COPY	BUN	WGT	CPY	WGT	VOLUME	EXT	VOL	EXT	WGT	
1	449	331781	100	1	10204	06	ENTRAITEEN		37	17.000		.170		.06	239.76				6.290	
					101	1	10470	06	TWIST	1	13	10.750		.430	.16	656.64				16.340
					103	1	13911	10	TV Y NOVELAS		8	10.375		.415	.15	129.60				3.320
					104	1	03020	06	ROAD & TRACK		3			.695	.23	74.52				2.005
					105	1	00630	06	POPULAR MECHANICS		7			.545	.23	173.00				3.015
					106	1	34001	06	CAR CRAFT		4			.410	.14	60.48				1.640
					107	1	03595	06	THE SOURCE		4			1.000	.34	146.88				4.000
					100	1	01665	08	SUPER EASY TO GO		10			.145	.21	113.40				1.450
															1595.16				30.940	
2	449	331781	100	2	01665	08	SUPER EASY TO GO		2				.145	.21	22.68				.290	
					109	2	35377	06	TEEN MACHINE		5			.330	.15	81.00				1.650
					110	2	33936	06	EBAY MAGAZINE		9			.515	.23	223.56				4.635
					111	2	40700	06	GUN WORLD		4			.420	.14	60.48				1.600
					113	2	14276	50	BHG BETTER LIVING	1		4.300		.215	.14	151.20				4.300
					114	2	34945	08	SURFER		4			1.005	.30	129.60				4.020
					115	2	00137	27	ALL STAR HD SH		5			.265	.20	75.60				1.325
					117	2	00307	54	DELL PEN PUZ HD		6			.600	.42	272.16				3.600
					118	2	13374	05	BLAMOUR ESPANOL		3			.640	.23	74.52				1.920
					121	2	02079	07	FIT SPECIALS		6			.350	.10	64.80				2.100

L(024,002) Font: TrueType Printer: Ready

## Achieve Higher Productivity with DPS "Optimum Tote Flow" - OTF

### OTF: Optimum Tote Flow

PS8 - TOTE USAGE AUDIT REPORT FOR 05000000 05/04/00 PAGE

SEG	NBR	RETAILER	INV NBR	BIN	TOTE	TITLE	ISS NAME	BUN	COPY	BUN WGT	CPY WGT	VOLUME	EXT VOL	EXT WGT										
1	449	331781	100	1	10204	06 ENTERTAIN		37	17.000	.170	.06	239.76	6.290											
				200	1	02720	50 SEARCH A WORD		8		.360	.37	319.60	2.800										
				300	1	34016	06 TEEN		19	16.125	.520	.17	340.04	9.000										
				400	1	00345	06 GOOD HOUSEKEEPING		1	19.750	.790	.26	421.20	.790										
1329.40 19.040																								
2	449	331781	400	2	00345	06 GOOD HOUSEKEEPING		2	6	19.750	.790	.26	1572.48	44.240										
1572.48 44.240																								
3	449	331781	400	3	00345	06 GOOD HOUSEKEEPING		0	19.750	.790	.26	224.64	6.320											
							500							3	01421	00 MEN'S WORKOUT		3		.300	.15	40.60	1.140	
							101							3	10470	06 TWIST		1	13	10.750	.430	.16	656.64	16.340
							201							3	03323	00 FURIA USA		2		.205	.11	23.76	.570	
							301							3	02725	06 WIZARD		1	6.200	.620	.24	259.20	6.200	
							401							3	00075	06 MCCALL'S		19		.420	.18	369.36	7.900	
1582.20 38.550																								
4	449	331781	401	4	00075	06 MCCALL'S		16		.420	.18	311.04	6.720											
							501							4	02135	35 GUITAR WORLD		6		.370	.20	129.60	2.220	
							103							4	13911	10 TV Y NOVELAS		8	10.375	.415	.15	129.60	3.320	
							202							4	02619	07 FUN N EASY CMO.		5	3.000	.150	.18	40.60	.750	
302	4	00660	06 REDBOOK		1	11	14.000	.740	.29	970.92	22.940													

L(024,002) Font: TrueType Printer: Ready

Containers move quickly through "pick zones" encouraging increase pick throughput.



Please contact us for further information on how The **BOSS VIP v3 EXCLUSIVE** pick and verify system design can go to work for you. We look forward to having an opportunity to assist you.

Visit our Web Site @ [www.goDPS.com](http://www.goDPS.com)

Copyright 2000  
Data Processing Services, Inc.

email: [Guy@goDPS.com](mailto:Guy@goDPS.com)

4175 East Bay Drive  
Suite 110  
Clearwater, FL 33764  
727.532.9481