

**Leading the Way...**

Welcome to Data Processing Services, Inc. the World's leading supplier of systems and warehouse automation to the periodical industry. Data Processing Services, Inc. is an "employee owned" company with the demonstrated industry experience and expertise to help increase sales, reduce returns, cut overhead and eliminate waste!

DPS is uniquely positioned to assist clients with in the Periodical distribution industry by serving on the International Periodical Distributors Association (IPDA) Technical Committee actively involved in new data initiatives, bar code change impact and industry technical issues. IPDA is a long standing customer of DPS having initially contracted with DPS in 1982 to design, code and implement the industry's electronic supply chain system. Today nearly \$5 billion dollars of transactions are processed annually through IPDA's DPS supported system.

**NATIONAL DISTRIBUTOR SYSTEM**

The periodical industry have National Distributors who administrate product allocation, returns management, billing and marketing for multiple publishers. Companies such as Curtis Circulation Company (primarily a US based provider) and International Circulation Services (a joint Source Interlink Companies and Curtis Circulation Company venture wholesaling magazines to distributors internationally) are examples of "National Distributors". Both companies are current DPS customers.

The tasks for a National Distributor to represent multiple publishers by selling magazines wholesale to independent distributors for local route, regional and nationwide delivery are many. The ability to streamline, automate, improve efficiency and accuracy are key to success for single copy newsstand sales.

Today the importance of timely electronic data exchange, reduced returns, promotion monitoring/results tracking, multiple currency handling, product profit analysis, spread payment handling flexibility, miscellaneous and charge Back handling/monitoring are routine, yet labor consuming,



**NATIONAL DISTRIBUTOR SYSTEM KEY FEATURES**

- **SOR %**  
Fixed order purchases with an allowable return %
- **Multiple Currency Handling**  
By date foreign pricing and currency multiplier
- **Publisher Incremental Payment Handling**  
Spread payment periods for supplier payment per period entries for % of average sale or operator input amount, plus final for title.
- **Publisher Reporting**  
Provide the detail your suppliers want by title, issue, wholesaler, etc.
- **Electronic Data Exchange / IPDA EMS**  
Electronically send allotments, charges and credits; plus receive return affidavits. Best accuracy for data entry, least labor, fastest and best detail communicated between you and your customers
- **Print Schedules / Orders**  
Automate Print Order Notifications using schedules and convert to PDF for sending to Publishers and Printers

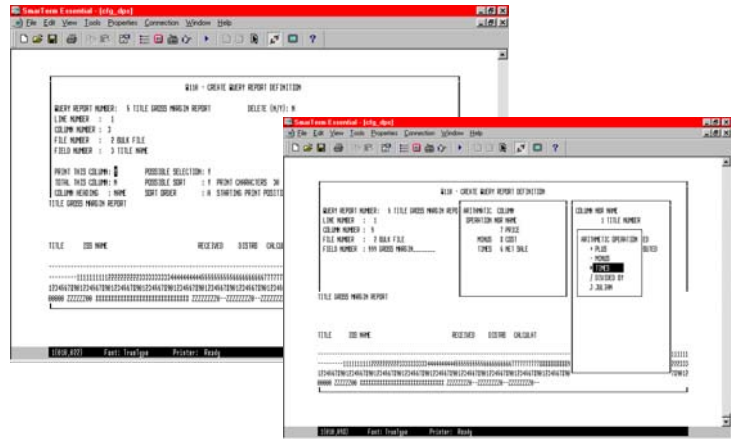
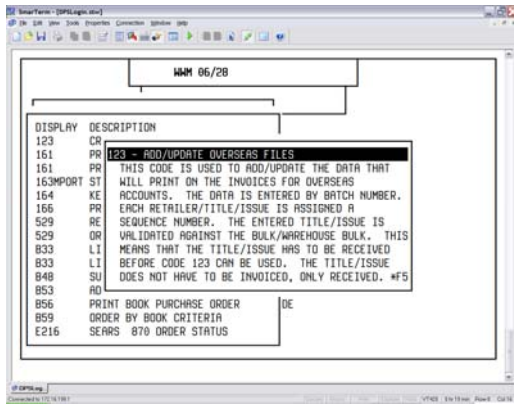
**NATIONAL DISTRIBUTORS WHO HAVE USED DPS PRODUCTS and SERVICES**

- Gordon & Gotch Periodicals
- Curtis Circulation Company
- Specialty Marketing Services
- Lords News International
- Kable Direct Services
- International Circulation Services
- Source Interlink Companies

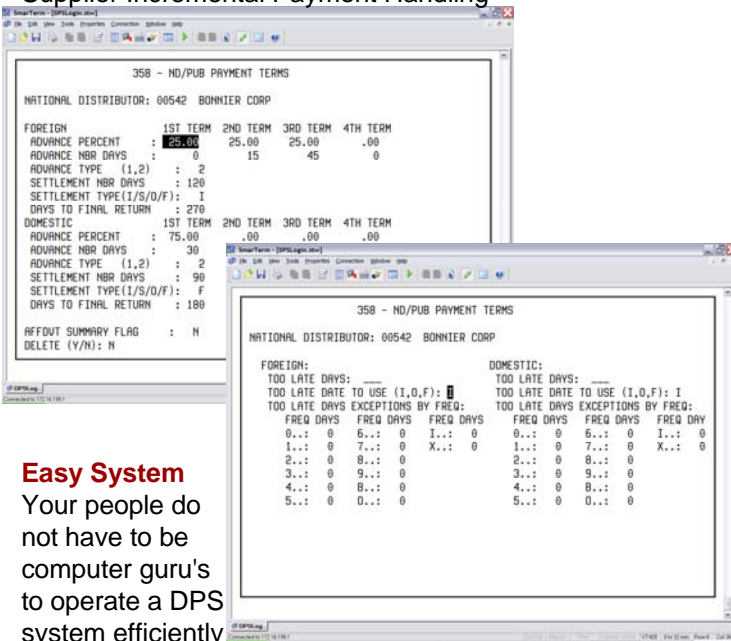


Easy navigation, online help, pop-up windows, intuitive!

Powerful Query Tool Set: Report Writer, Data Extract, and Customer Data Entry Screen Creator!



## Supplier Incremental Payment Handling



## Easy System

Your people do not have to be computer guru's to operate a DPS system efficiently and effectively. The extensive windowed help system uses a database search engine to lead an inexperienced user to the right function to achieve the desired results. Our system is a true flat file data base in every sense! Everywhere in the system the database search function reduces or eliminates the user's need to know crucial information to perform their function.

The **National Distributor System** is a totally integrated solution with complete A/R management system. Single entry of redundant data is shared across the multiple distribution systems. Regulatory rules can be set within the system to ensure requirements for distribution are met for your company, for your suppliers, and for your customers. What used to be complex tasks to perform restrictive / profit oriented / expansive trial distributions etc... are made with ease [CAD - Computer Assisted Distribution] in a DPS System.

## Account Receivables Management

- Automatic billing with customized messaging
- Flexible statement frequency with aging
- Open item and balance forward account handling
- Price exception by title, by customer, by region

## Customer Services

- Superior customer support from 8:00 AM through 6:00 PM EST (GMT -5). Our seasoned staff of professionals are able to quickly assess your problems and provide quality assistance to keep your system up and running.
- Optional 24 hour by 7 days customer support available
- Customer acclaimed programming staff performing enhancements on a regular basis and providing customization in a timely manner.

## Expertly Engineered Efficient Distribution Software and Technologies

| COMPETITIVE EDGE DISTRIBUTION SOLUTIONS                                                                                                                                                                                                                                                                                                          | WAREHOUSE AUTOMATION SOLUTIONS                                                                                                                                                                                                                                                                                                                                                                   |
|--------------------------------------------------------------------------------------------------------------------------------------------------------------------------------------------------------------------------------------------------------------------------------------------------------------------------------------------------|--------------------------------------------------------------------------------------------------------------------------------------------------------------------------------------------------------------------------------------------------------------------------------------------------------------------------------------------------------------------------------------------------|
| <ul style="list-style-type: none"> <li>• EDI (Electronic Data Interchange)</li> <li>• SBT/POS (Scan Based Trading and Point of Sale Solutions)</li> <li>• VMI (Vendor Managed Inventory Functionality)</li> <li>• Portable Computing Route Accounting Handhelds</li> <li>• Automated Efficient Receiving Wireless Put-Away Management</li> </ul> | <ul style="list-style-type: none"> <li>• High Density Pick BIN Zones Reducing Picker Travel Path</li> <li>• Ergonomic Flow Rack Integrated Pick to Conveyance</li> <li>• Multiple Full Carton Take-Ways Reduce Cartons in Pick Area</li> <li>• Optimum Carton Flow Design Increasing Carton Travel Rate</li> <li>• Exclusive Circulation Loop Directs Quality Control / Pack-out Flow</li> </ul> |

**PARTIAL DATA PROCESSING SERVICES CUSTOMER LISTING**

"We Team With You"